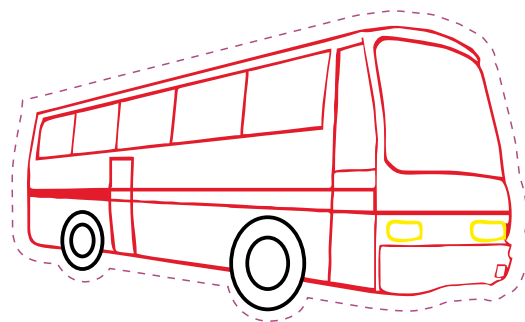
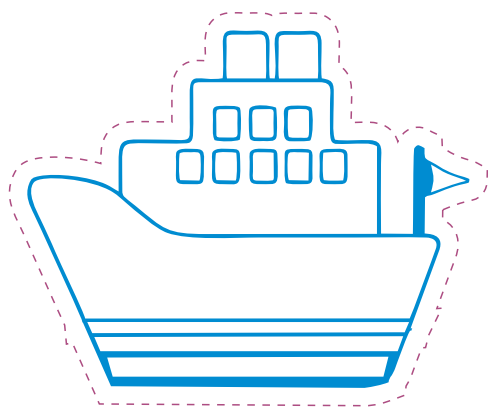
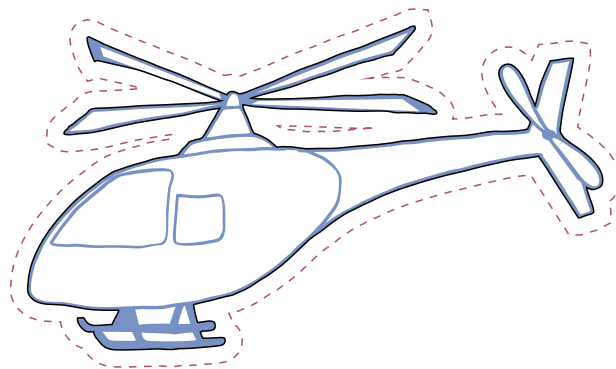
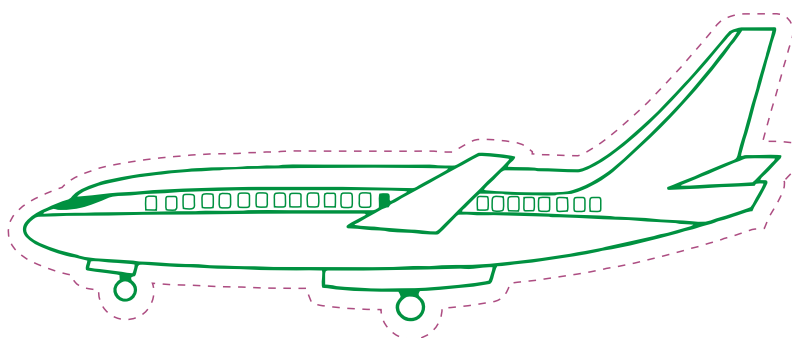
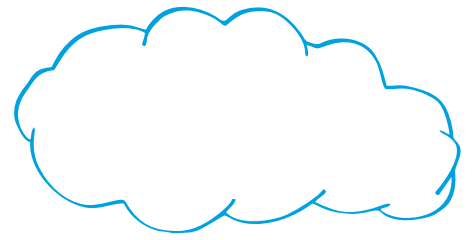
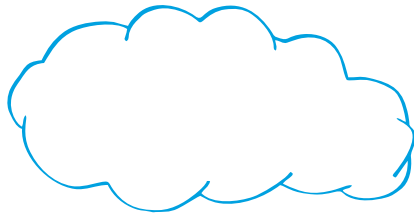
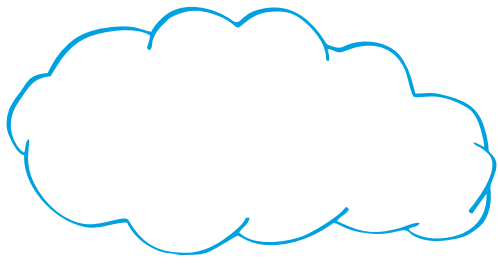
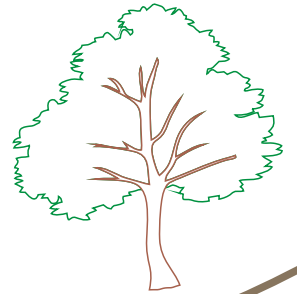
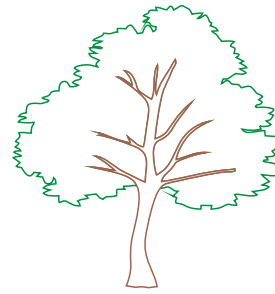
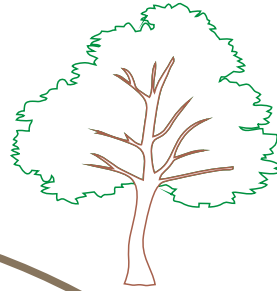
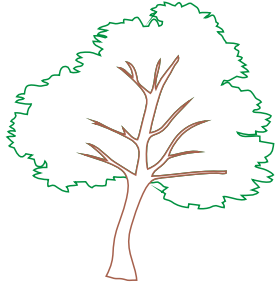
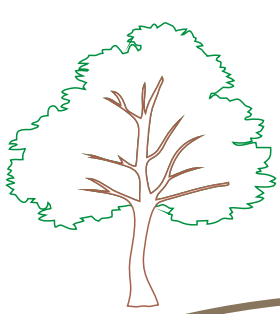
**AUTO****AUTOBUS****BROD****HELIKOPTER****AVION**

OBOJI DRVENIM BOJICAMA I IZREŽI PRIJEVOZNA SREDSTVA.
NA SLIJEDEĆOJ STRANICI RAZVRSTAJ IZREZANE SLIČICE NA ODREĐENA MJESTA PREMA
VRSTI NJIHOVA KRETANJA.
IZGOVARAJ REČENICE NPR. AUTO VOZI CESTOM, BROD PLOVI MOREM.



LETI



VOZI

PLOVI

